



**HOLLOW METAL DOOR SOLUTIONS**

# Company Profile

**ROBUST** incorporated in August 2020 as door dealers and in 2022 collaborated with OEM's to produce high end Steel Doors to cater the increasing requirements pertaining to hollow metal doors in commercial, residential and industrial sectors.

In the short span, ROBUST established its superiority in its chosen line of activity to offer products for the construction industry. ROBUST is driven by business values, listening to customer, understanding their needs and ensuring deliveries on time.

ROBUST believe that long term success is result of customer loyalty through commitment for finest product quality and service. We strive to continually improve quality and service of our products. We offer wide range of HMPS Doors and are able to cater complex requirements with our expertise.

Our commitment and motivated team of experts with vast experience in Hollow Metal Doors and other building material products are updated with changing needs of industry. Our fire doors are designed to meet requirements of latest Indian standards IS 3614 : 2021



## ROBUST PRODUCT RANGE

- FIRE DOORS
- MULTIPURPOSE DOORS
- CLEAN ROOM DOORS
- WOOD FINISH STEEL DOORS
- DESIGNER STEEL DOORS
- ARCHITECTURAL HARDWARE



## WHY ROBUST

- DOORS CERTIFIED AS PER IS 3614 : 2021
- CBRI CERTIFIED DOOR FOR 120 MINS INTEGRITY
- SPECTRO CERTIFIED DOOR FOR 120 MINS INTEGRITY AND 30 MIN INSULATION
- MAHARASHTRA FIRE SERVICE LICENCE AGENCY

## Our VISION

To be a leading player in field of Hollow Metal Door Industry offering best in class products and services.

# The ROBUST Edge...



A Team with Rich  
Experience in Hollow  
Metal / Building Material



Committed to quality,  
Timely Delivery and Service



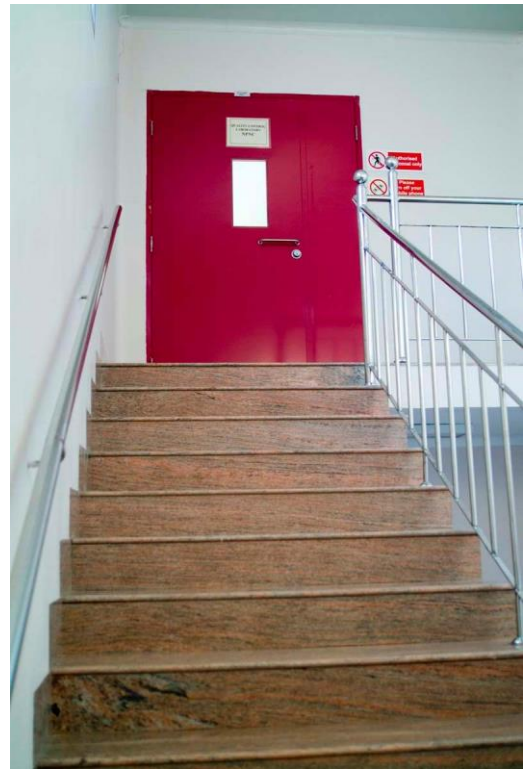
Compliance with the  
regulatory requirements



Ability to understand  
customer requirements



Detailed Drawing  
Creation



## Our MISSION

Satisfied Customers through Quality Products, Services, Compliance and adhere to timelines

# FIRE DOORS



## Door Skin Material

Galvanized Steel As Per IS 277

## Door Skin Thickness

0.8 mm / 1.2 mm

## Frame Sheet Thickness

1.2 mm / 1.6 mm

## Infill Material

Honeycomb / Mineral Wool

## Door Thickness

45 mm

## View Glass

Standard Sizes Are 200 X 300 Mm, 300 X 300 Mm. The Glasses Shall Be Fire Rated.

## Finish

Pure Polyester Powder Coated To Any RAL Shade  
Stained To Withstand 300 Hours

## Packing

The Frame And Shutters Shall Be Wrapped With Protective Film And Put Into Corrugated Boxes. The Boxes Shall Be Crated Or Palletized Depending On The Quantity And Mode Of Transport.

Frame Profile (Standard)

## Frame Profiles

Single Rebated Frame Shall Be 100 X 58 Mm

Double Rebated Profile 150 Mm X 58 Mm.

The Frames Are Manufactured With Bolted Joints As A Standard And In Knock Down Condition.

Non Standard Frame Profiles Can Be Manufactured On Demand.



## Areas of Fire Door Application

Office Buildings – Hospital Building – IT Park – Industrial Buildings – Commercial Buildings – Residential Buildings

# DUCT/SHAFTS DOORS



## Door Skin Material

Galvanized Steel As Per IS 277 /  
Stainless Steel 304 Grade

## Door Skin Thickness

0.8 mm / 1.2 mm

## Frame Sheet Thickness

1.2 mm / 1.6 mm

## Infill Material

Honeycomb / Mineral Wool

## Door Thickness

45 mm

## View Glass

Single Glazed Toughened/Fire Glass of standard and non standard sizes

## Finish

Pure Polyester Powder Coated To Any RAL Shade  
Stained To Withstand 300 Hours

## Packing

The Frame And Shutters Shall Be Wrapped With Protective Film And Put Into Corrugated Boxes. The Boxes Shall Be Crated Or Palletized Depending On The Quantity And Mode Of Transport.

Frame Profile (Standard)

## Frame Profiles

Single Rebated Frame Shall Be 100 X 57 mm

Double Rebated Profile 140 Mm X 57 Mm.

The Frames Are Manufactured With Bolted Joints As A Standard And In Knock Down Condition.

Non Standard Frame Profiles Can Be Manufactured On Demand.

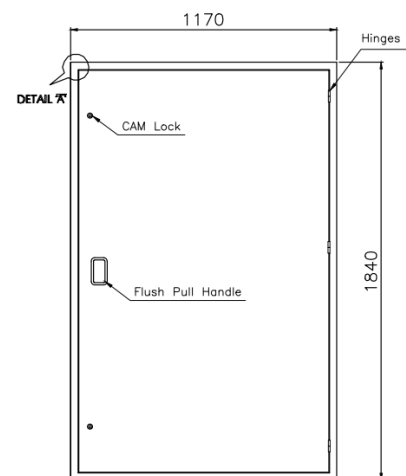


## Areas of Application

Electrical Duct – Plumbing Duct – Fire Fighting Duct – LV Duct

# DUCT/SHAFTS

## SINGLE SKIN



### Door Skin Material

Galvanized Steel As Per IS 277

### Door Skin Thickness

0.8 mm

### Frame Sheet Thickness

1.2 mm

### Frame Sheet Thickness

1.2 mm

### View Glass

Single Glazed Toughened/Fire Glass of standard and non standard sizes

### Finish

Pure Polyester Powder Coated To Any RAL Shade

Stained To Withstand 300 Hours

### Packing

The Frame And Shutters Shall Be Wrapped With Protective Film And Put Into Corrugated Boxes. The Boxes Shall Be Crated Or Palletized Depending On The Quantity And Mode Of Transport.

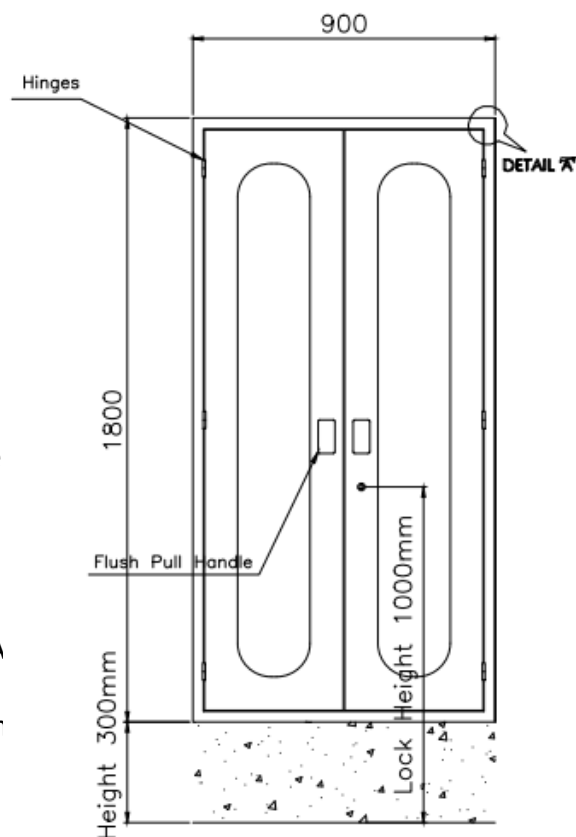
Frame Profile (Standard)

### Frame Profiles

Single Rebated Frame Shall Be 65 x 45mm

The Frames Are Manufactured With Bolted Joints As A Standard And In Knock Down Condition.

Non Standard Frame Profiles Can Be Manufactured Or Demand.



### Areas of Application

Electrical Duct – Plumbing Duct – Fire Fighting Duct – LV Duct

# CLEAN ROOM DOORS



## Door Skin Material

Galvanized Steel As Per IS 277 /  
Stainless Steel 304 Grade

## Door Skin Thickness

0.8 mm / 1.2 mm

## Frame Sheet Thickness

1.2 mm / 1.6 mm

## Infill Material

Honeycomb / Mineral Wool

## Door Thickness

45 mm

## View Glass

Double Glazed Toughened Glass of sizes 350x450mm,  
450x650mm and other sizes also available

## Finish

Pure Polyester Powder Coated To Any RAL Shade  
Stained To Withstand 300 Hours

## Packing

The Frame And Shutters Shall Be Wrapped With  
Protective Film And Put Into Corrugated Boxes. The  
Boxes Shall Be Crated Or Palletized Depending On The  
Quantity And Mode Of Transport.

Frame Profile (Standard)

## Frame Profiles

Single Rebated Frame Shall Be 80 x 57mm , 100 X 57  
Mm

Double Rebated Profile 140 Mm X 57 Mm.

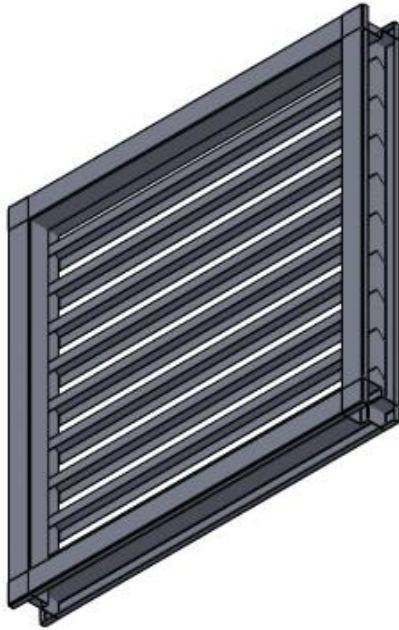
The Frames Are Manufactured With Bolted Joints As A  
Standard And In Knock Down Condition.

Non Standard Frame Profiles Can Be Manufactured On  
Demand.





# LOUVERED DOORS



## Door Skin Material

Galvanized Steel As Per IS 277 /  
Stainless Steel 304 Grade

## Door Skin Thickness

0.8 mm / 1.2 mm

## Frame Sheet Thickness

1.2 mm / 1.6 mm

## Infill Material

Honeycomb / Mineral Wool

## Door Thickness

45 mm

## Louvers

In-built GI Louvers of various sizes

## Finish

Pure Polyester Powder Coated To Any RAL Shade  
Stained To Withstand 300 Hours

## Packing

The Frame And Shutters Shall Be Wrapped With  
Protective Film And Put Into Corrugated Boxes. The  
Boxes Shall Be Crated Or Palletized Depending On The  
Quantity And Mode Of Transport.

Frame Profile (Standard)

## Frame Profiles

Single Rebated Frame Shall Be 100 X 57 Mm

Double Rebated Profile 140 Mm X 57 Mm.

The Frames Are Manufactured With Bolted Joints As A  
Standard And In Knock Down Condition.

Non Standard Frame Profiles Can Be Manufactured On  
Demand.



Areas of Fire Door Application

Plumbing Shafts-Electrical Rooms-Generator Rooms-Plant Rooms



# RESIDENTIAL DOORS



## Door Skin Material

Galvanized Steel As Per IS 277 /  
Wooden Finish Application

## Door Skin Thickness

0.8 mm / 1.2 mm

## Frame Sheet Thickness

1.2 mm / 1.6 mm

## Infill Material

Honeycomb / Mineral Wool

## Door Thickness

45 mm

### Finish

Wooden Finish  
Embossed Finish

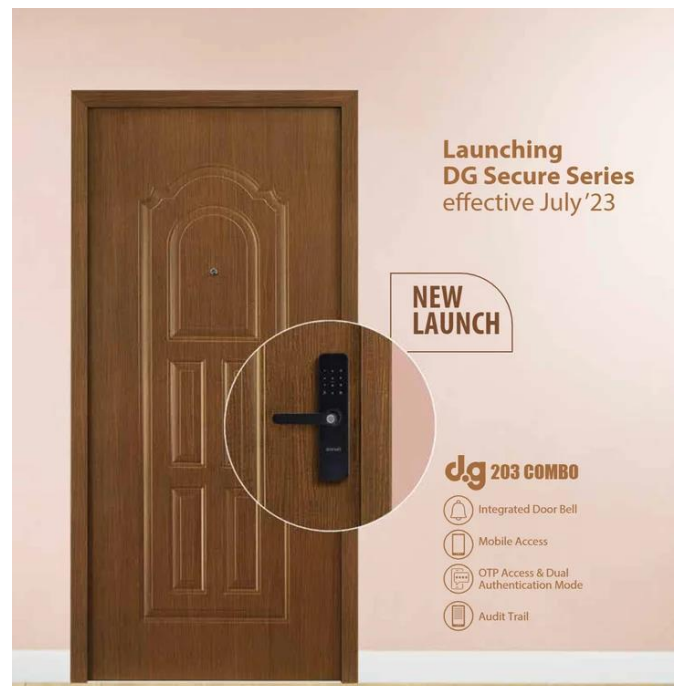
### Packing

The Frame And Shutters Shall Be Wrapped With Protective Film And Put Into Corrugated Boxes. The Boxes Shall Be Crated Or Palletized Depending On The Quantity And Mode Of Transport.

Frame Profile (Standard)

### Frame Profiles

Single Rebated Frame Shall Be 100 X 57 Mm  
Double Rebated Profile 140 Mm X 57 Mm.  
The Frames Are Manufactured With Bolted Joints As A Standard And In Knock Down Condition. Non Standard Frame Profiles Can Be Manufactured On Demand.



Areas of Fire Door Application

Main Entrance, Bedroom Door, Internal Doors

# FIRE DOOR CERTIFICATIONS

Robust has tested doors to highest standards of safety, performance and quality. Our Fire Doors are tested as per latest Indian Standards IS 3614 : 2021 at leading testing labs. Our doors are tested to withstand extreme conditions for longer durations to ensure complete safety...

Door Types Tested : Single Leaf and Double Leaf  
Standards : IS 3614; 2021- Fire Doors and Doorsets  
ISO 3008-1: - Fire resistance tests — Door and shutter assemblies.  
INTEGRITY 120 minutes  
INSULATION 30 minutes  
Classification of Door: FD 120 class asper IS 3614:2021  
TESTING LABORATORY Spectro Analytical Labs Private Limited  
TESTING LABORATORY CBRI, Roorkee





Spectro

Report No. M231205006/M23126006-11

TEST REPORT

10. SUMMARY OF RESULTS

The doorset has been evaluated in accordance with  
IS 3614; 2021- Fire Doors and Doorsets — Specification  
The requirement of the standard was satisfied for:

INTEGRITY

INSULATION

120 minutes

31 minutes

Classification of Door: FD 120 class asper IS 3614:2021. (with Insulation minutes)

11. PERFORMANCE CRITERIA

11.1 Integrity Performance:

Failure of the test construction to maintain integrity shall be deemed to have occurred when collapsed, sustained flaming for more than 10 seconds on the unexposed face, ignition or glowing of cotton pad when applied or permitting the penetration of gas gauges, as specified in IS 3614 Section 3.5.1.

11.2 Insulation Performance:

The mean unexposed face temperature shall not be more than 140°C above its initial value and that maximum temperature rise shall not be in excess of 180°C above the initial mean unexposed face temperature or when integrity failure occurs, as specified in IS 3614 Section 3.5.2.

12. LIMITATION

The results only relate to the behavior of the specimen of the element of construction under the particular conditions of test; they are not intended to be the sole criteria of assessing the potential fire performance of the element as use nor do they reflect the actual behavior in fire.



Reviewed By



TC/DATE



ULR-TC63142400003129P



Authorized Signatory

Legal Entity: Spectro Analytical Labs Private Limited (formerly Spectro Analytical Labs Limited), CN 17/42280X/1989/TC092898  
Part of Eurofins Scientific S&S  
S-1, GNEP/ID, Sanganur Industrial Area, Phase-V, Kallur, Coimbatore-641003 (India)  
+91-120-2341252, +91-11-46522000, +91-11-41611000 | www.spectro.in | care@spectro.in

ISO 9001:2015, ISO 14001:2015 & ISO 45001:2018 Certified Laboratory



अग्नि अनुसंधान प्रयोगशाला  
FIRE RESEARCH LABORATORY  
सी.एस.आई.आर. - केन्द्रीय भवन अनुसंधान संस्थान  
CSIR - Central Building Research Institute  
रूरेकी - 247 667 (उत्तराखण्ड) भारत | Roorkee - 247 667 (U.K.) INDIA

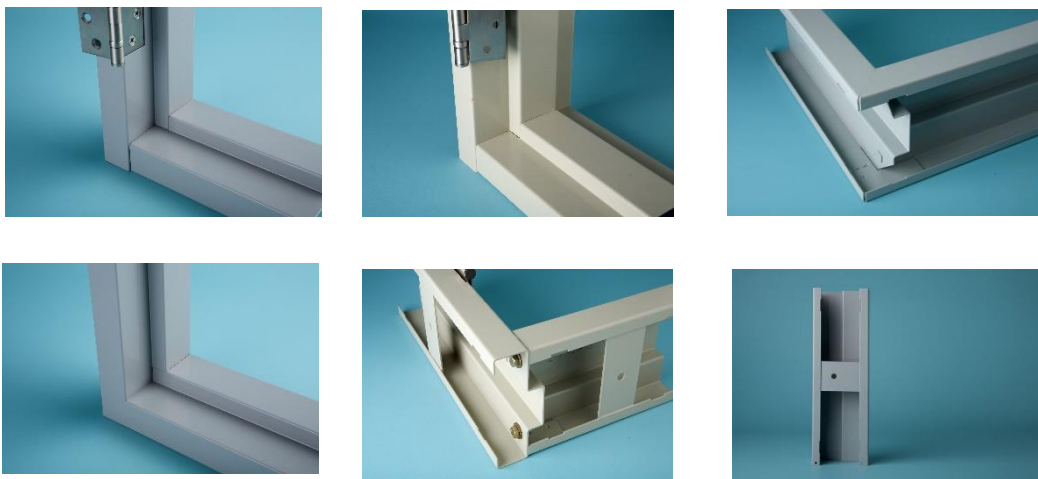


Before Test

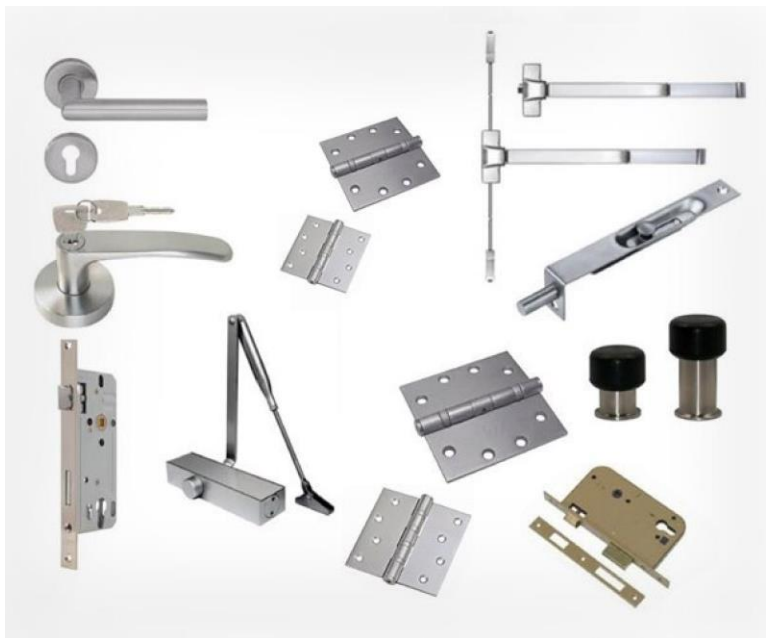
After Test

After Test

# Door and Frame Variants



## Door Hardware



- Hinges
- Door Closer
- Dead Lock
- Sash Lock
- Lever Handle
- Panic Bar
- Concealed Flush Bolt
- Door Stopper
- D Type Handle

# Collaboration with OEM's to produce high end Steel Doors



- We have collaborated with OEM's to manufacture high end Fire and General Doors as our **design and standards**. Equipped with high end machines like CNC Laser Cutting, CNC Bending, Hot Press, Honeycomb Expander, Fabrication tools our manufacturing setup is capable to handle most complex jobs very effectively and efficiently.
- Most importantly ROBUST has got fire door tested & certified as per latest IS 3614 : 2021 standards and as per ISO 3008-1: - Fire resistance tests — Door and shutter assemblies
- This gives us an edge over others and also at same time our client is assured of getting perfect door which will suffice the purpose of safeguarding life and property.
- With capacity of producing 40+ doors a day we plan to expand to cater larger requirements.





# Our Esteemed Client

 <p><b>PARANJAPE</b> The Spirit Of New India</p>	 <p><b>KOHINOOR</b> A KRISHNAKUMAR GOYAL ENTERPRISE</p>	 <p><b>RAMA GROUP</b> Exceeding Excellence</p>	 <p><b>GOEL GANGA DEVELOPMENTS</b></p>
 <p><b>MALPANI GROUP</b> REAL ESTATE DIVISION</p>	 <p><b>RELIABLE</b> CONSTROTECH ENTERPRISES</p>	 <p><b>smartworks</b></p>	
 <p><b>ADITYA BIRLA</b> SCIENCE &amp; TECHNOLOGY</p>	 <p><b>Mohanlal Bishnoi</b> BUILDERS &amp; DEVELOPERS</p>	 <p><b>MIT-WPU</b> ॥ विद्या ऽपि विद्या ॥</p>	 <p><b>NATIONAL INSURANCE ACADEMY</b></p>
 <p><b>GROWEL</b> SINCE 1957 <b>Grauer &amp; Weil (India) Limited</b></p>	 <p><b>west Pioneer</b></p>	 <p><b>ZYETA</b></p>	 <p><b>RMK</b> INFRASTRUCTURE PVT. LTD.</p>
 <p><b>RPPL</b> RATNARUP PROJECTS PVT. LTD.</p>	 <p><b>S. T. BIRADAR</b> ENGINEERS &amp; CONTRACTORS PVT. LTD.</p>	 <p><b>FLAME UNIVERSITY</b></p>	 <p><b>DOMS</b> EVERY AMBITION NEEDS PREPARATION</p>
 <p><b>GLOBAL SECURE</b> BUILDING YOUR VISIONS</p>	 <p><b>DHOOT BUILDERS</b></p>	 <p><b>AMS</b></p>	 <p><b>SUROJ</b></p>
 <p><b>ABH DEVELOPERS</b></p>	 <p><b>SUKHWANI ASSOCIATES</b> BUILDING EXCEPTIONALLY</p>	 <p><b>SOLITAIRE</b></p>	 <p><b>G</b> Crompton Greaves</p>





Sales Office & Display Centre

📍 Gat No. 37/1, Near Shell Petrol Pump  
Bhukum, Mulshi Road, Pune 412115

🌐 [www.robustent.com](http://www.robustent.com)  
☎ +91 9967534560 | +91 7559160031

•.....•  
We request you to contact us for enquiries and orders.  
We also invite you to visit our display centre  
•.....•

# Thank You